



An innovative, versatile gate that adapts to all requirements

## INDUSTRIAL SLIDING GATES

### ALLIX®

#### HOUSING COMPLEXES



#### PUBLIC AREAS



#### SERVICE SECTOR SITES



#### INDUSTRIAL AND LOGISTICS SITES



#### CHOICE AND STYLE

- Various infills matching our fencing.
- A modern and discreet design with integrated components.
- 2 motorisation types: fail-secure and fail-safe.

#### EASY INSTALLATION

- Motorised version: preset and pre-wired in factory.
- The included embedding jig functions as an anchoring template.

#### SECURITY

- Manual version: lock with European cylinder.
- Motorised version equipped with the safety devices: detection cells, sensitive edges, LED flashing lights and area lighting.
- Optional: the control board cabinet or column encases and protects the motor and accessories.

#### FEATURES



Manual, motor-ready and motorised



Heights: 1 m to 2.50 m  
Openings: 3 m to 12 m

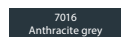


Frame section: 80 x 60 mm



Post section: 100 x 100 to 150 x 150 mm

- Standard infill: non-overstanding 25 x 25 mm square bars, 110 mm intervals
- Frame section varies depending on the dimensions
- Post section varies depending on the dimensions
- Zinc-epoxy and polyester finish

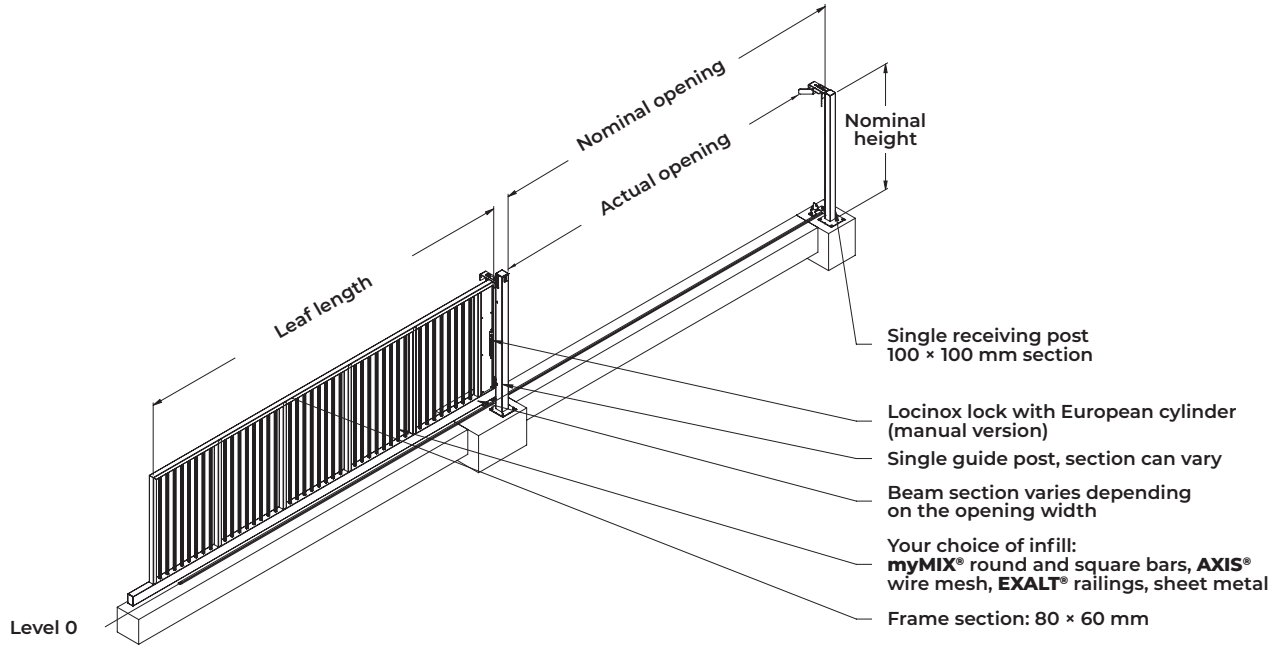


Optional:

- Matt and textured finishes
- "Protect+" coating
- Hot-dip galvanised



**TECHNICAL FEATURES**

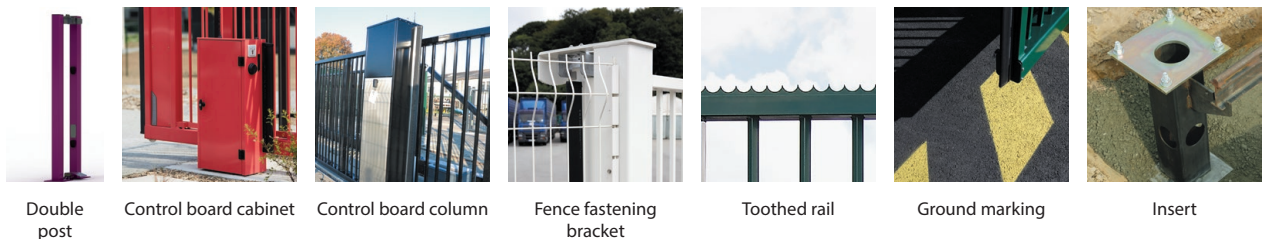


NOMINAL OPENING (m)	3.00	4.00	5.00	6.00	7.00	8.00	9.00	10.00	11.00	12.00
Actual opening	3.02	4.02	5.02	6.02	7.02	8.02	9.02	10.02	11.02	12.02
Leaf length, manual	3.46	4.41	5.35	6.43	7.51	8.46	9.40	10.48	11.29	12.51
Leaf length, manual EXALT® and sheet metal*	4.00	5.22	5.22	6.43	7.65	8.86	10.08	11.29	11.29	12.51
Leaf length, motorised	3.81	4.81	5.81	6.81	7.81	8.81	9.81	10.81	11.81	12.81
Leaf length, motorised EXALT® and sheet metal*	4.00	5.22	5.81	6.81	7.81	8.86	10.08	11.29	11.81	12.81
Beam section (mm)	150 x 100 mm						150 x 150 mm			
HEIGHT (m)	GUIDE POST SECTION AND THICKNESS (mm)									
1.00										
1.20										
1.50										
1.70										
1.80										
2.00										
2.20										
2.50	150 x 150 x 5									

\* up to 8 metres for sheet metal.

**OPTIONS**

- Infills.
- Motorised or motor-ready operation.
- Change of beam section.
- Change of post section.
- Insert-mounted: allows civil engineering works to be prepared before gate installation.
- Double post (guide or receiv. post).
- Control board cabinet (height 1 m).
- Control board column (integrated in the guide post).
- Fence fastening bracket.
- Toothed rail.
- Ground marking.
- HGV detection cells.



**CONTROL ACCESSORIES:**  
SEE THE "CONTROL ACCESS" SECTION

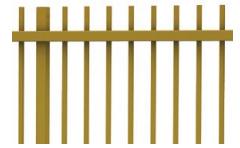




**INFILLS**

**myMIX®square railings**

- 25 x 25 mm square bars.
- Overstanding or non-overstanding.
- Straight or angled at 45°.
- Flat cut.
- 80 x 60 mm bracing rails for the version with overstanding bars.

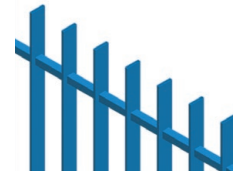


Opening 6 m, height 2 m - Motorised operation - Control board cabinet option.

**myMIX® Flat railings**

- 50 x 10 mm flat bars.
- Overstanding\*.
- \*Note: On this model, the bars run through the rail.

- 80 x 60 mm bracing rails



Opening 6 m, height 2 m - Motorised operation - Control board cabinet option.

**myMIX®round railings**

- Round bars 20, 25 or 30 mm dia., overstanding or non-overstanding.
- Flat cut.

- 80 x 60 mm bracing rails for the version with overstanding bars.

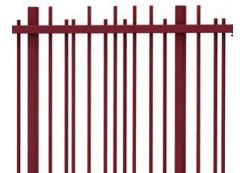
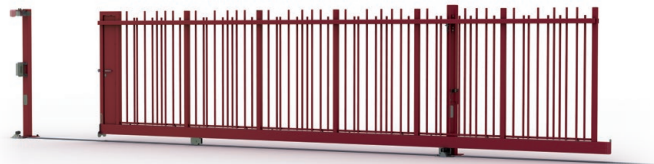


Opening 9 m, height 2.50 m - Motorised operation - Control board cabinet option.

**EXALT® railings**

- 25 mm dia. round bars or (20 x 20 mm square bars for EXALT K-ré infill).
- Matching all EXALT models\*.

- 80 x 60 mm bracing rails.



Opening 7 m, height 2 m - Manual operation.

\* For technical reasons, the Delta infill is not offered

**AXIS® wire mesh**

- Right panel welded in the frame.
- 200 x 50 mm mesh.
- Horizontal double wire: dia. 6 mm
- Vertical wire: dia. 5 mm



Opening 4.50 m, height 2 m - Manual operation.

**Sheet metal**

- Openings up to 8 m.
- Guide post section varies depending on gate dimensions\* (120 x 120 or 150 x 150 mm).
- 80 x 60 mm bracing rails.
- 150 x 150 mm beam.
- \* see product sheet



Opening 5 m, height 1.80 m - Motorised operation.



**DRIVE MOTOR**

High-power drive motor (up to 70 % usage)

Smooth operation: Slows at the start and end of the cycle

2 motorisation types:

- FAIL-SECURE motor for leaves up to 1.5 tonnes

Cantilever: 3 to 8 m opening

Sliding: 3 to 9 m opening

NEW: Travel speed: 14 m/minute

Note: the control board column or cabinet is mandatory.

--> In the event of a power loss, the gate can be operated manually without a key (recommended for housing complexes and public areas)

- FAIL-SAFE motor for leaf up to 1.5 tonnes

Cantilever: 3 to 8 m opening

Sliding: 3 to 9 m opening

Travel speed: 12 m/minute

--> In the event of a power supply failure, operated by a backup battery and key-operated stoppage (suitable for industrial, logistics and service sector sites)

- FAIL-SAFE motor for leaf up to 3 tonnes

Cantilever: 8.5 to 10 m opening

Sliding: 9.5 to 12 m opening

Travel speed: 9 m/minute

--> In the event of a power supply failure, operated by a backup battery and key-operated stoppage (suitable for industrial, logistics and service sector sites)



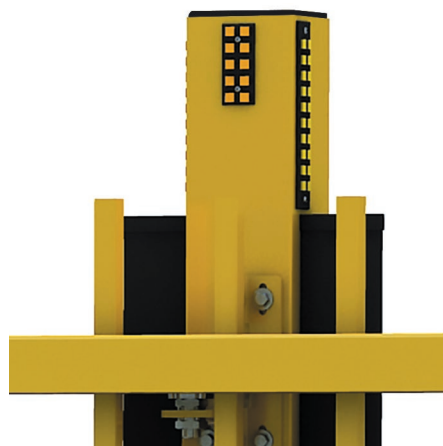
\*See the "Warranty of fitness" paragraph in the "Guarantees,

Standards & Regulations" section.

For more information, request the ALLIX\* motorised sliding gate product sheet.



Built-in lock for the manual version.



LED surface-mounted area lighting and flashing lights



External rack for the motorised and motor-ready sliding gate.