



Stylish and durable
easy to install
base plate

STEEL BASE PLATE

SOUBAX® BASE PLATE



DIRICKX
ANTI-CORROSION
GUARANTEE
10 YEARS
POLYESTER

PRIVATE HOMES



HOUSING COMPLEXES



PUBLIC AREAS



SERVICE SECTOR SITES



CHOICE

- 5 plate sizes
- Suitable for our 4 posts for rigid panels (slotted and H-shaped)
- Wide range of possible configurations: plates - posts - privacy fencing system - DIRICKX panels

RESILIENT

- Plate resistant to green space maintenance machines (trimmer, brushcutter and gas-powered brushcutter)
- Long-lasting
- Anti-corrosion guarantee offering outstanding resistance to UV and adverse weather
- Less susceptible to damage than a concrete board

EASY TO INSTALL

- Lightweight plate (approximately 7 kg compared to 50 kg for a concrete gravel board), making the task easier for installers
- No need for handling equipment, reducing the installation time

STYLE

- Trendy, stylish and refined, an alternative to concrete gravel boards
- Colours that match the most common colours used in housing (panels, posts, privacy fencing systems, gates, exterior joinery, etc.)

FEATURES



Material: Steel



2 widths:

4.5 cm (folding tab 3.5 cm)



5 lengths:

2,498 / 2,500 / 2,515 / 2,518 / 2,525 mm

3.5 cm (cut 1.8 cm off the edges)



Height:

25 cm



Weight:

Approx. 7 kg

7016 glossy
Anthracite grey

7016 textured
Anthracite grey

7035 textured
Light grey



Grey 7016
gloss finish



Grey 7016
textured finish



Grey 7035
textured finish



CONFIGURATION WITH PANEL / POST

NAME OF THE PLATE	COMPATIBLE POST	PANEL WIDTH (mm)	PANELS	POST CENTRE DISTANCE (mm)	SOUBAX DIMENSIONS (CM) Length/height/width	WEIGHT (kg)
AXYLE[®] - AXIS[®] - AXOR[®] PLUS	AXIS [®]	2480	AXIS [®] S / M / C / SR	2536	250/25/4.5*	7.4
	AXYLE [®]	2500	AXYLE [®] MS / CS AXIS [®] D / DR	2520	250/25/4.5	7.4
	AXOR [®] PLUS	2480	AXIS [®] S / M / C	2510	250/25/4.5*	7.4
AXOR[®] PLUS	AXOR [®] PLUS	2500	AXYLE [®] MS / CS AXIS [®] D	2535	251.5/25/4.5*	7.4
AXOR[®] COMBINED WITH A FLAT PANEL	AXOR [®]	2500	AXIS [®] D	2535	251.8/25/3.5**	7
AXOR[®]	AXOR [®]	2480	AXIS [®] S / M / C / SR	2510	249.8/25/3.5**	6.9
AXIS[®] COMBINED WITH A FLAT PANEL	AXIS [®]	2500	AXIS [®] D / DR	2561	252.5/25/4.5*	7.4

*Tab to be folded over the edge of the plate for a width of 3.5 cm
 ** Cut-out on the edges of the plate with a width of 1.8 cm



FOLDING OF THE TAB

For the following plates: AXYLE[®] - AXIS[®] - AXOR[®] PLUS combined with a flat panel, a tab is to be folded if necessary.

Lower the tab of the plate:



1
Warning: be careful not to damage the plate chalking. Place tape or another type of material between the clamp and the plate.



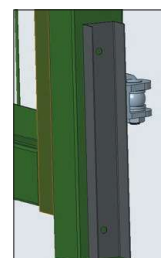
2
Use a pair of pliers to rotate and twist the tab. TO BE done before mounting the plate between the posts.

ACCESSORIES

"U" attachment system (angle) allowing to attach the SOUBAX[®] plate from a gate or a wall.

- 2 dimensions: 45 and 35 mm
- Galvanised steel
- Self-tapping screws supplied

- 7016 glossy Anthracite grey
- 7016 textured Anthracite grey
- 7035 textured Light grey



Note: any privacy accessories used with fences may potentially render the fence more susceptible to wind damage. Consult our installation recommendations on p. 109.

